

HIAWATHA SCHOOL

42nd Avenue S. and 42nd Street E.

1931

Miss Agnes Raddatz, Principal

Originally Erected	1916
Number of Class Rooms	22
Number of Special Rooms	0
Enrollment	869

## HIAWATHA SCHOOL

This school building has wood joisted interior construction but is only one story in height with an outside exit in every room making it unusually safe from a life hazard point of view.

### DETAILED REPORT

OCCUPANCY: Boiler room and fan room in basement. Auditorium, teachers lunch room and class rooms first.

CARE AND MAINTENANCE: Building has received good care.

EGRESS FACILITIES: Good. Direct egress from each class room. Lack of signs marking path of egress from auditorium reduces value of exits.

COMMON HAZARDS: LIGHT -- Electric with wiring in rigid conduit.

HEAT -- Steam from two coal fired low pressure boilers in fire-proof basement room not cut off. VENTILATION -- Metal ventilating ducts extend through roof.

SPECIAL HAZARDS: Gas plates in teachers lunch room and community kitchen safely arranged.

EXPOSURES: None.

FIRST AID PROTECTION: Poor protection afforded by insufficient supply of chemical extinguishers.

PUBLIC PROTECTION: Full city protection, four double head hydrants on 6 inch and 8 inch mains available within 400 feet. Fire department located three-fourths mile away over good unpaved streets. Fire alarm box within 150 feet.

### RECOMMENDATIONS

1. Chemical extinguisher equipment should be made standard.
2. All openings to boiler room should be protected with approved three ply fire doors maintained automatic.
3. Paths of egress from auditorium should be clearly marked.
4. Self-closing metal covered trap doors should be provided for openings to roof space.
5. Opening from first floor to tunnel should be provided with metal covered door and kept closed at all times.

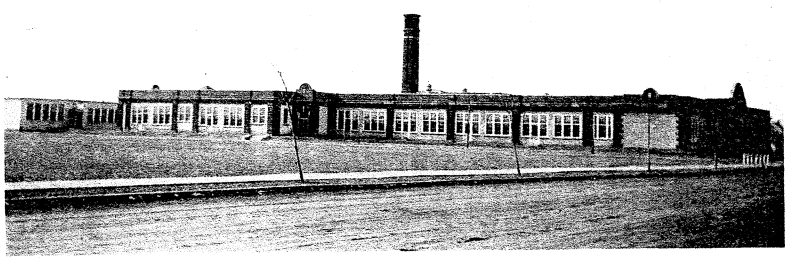
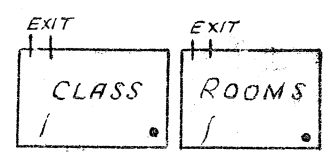
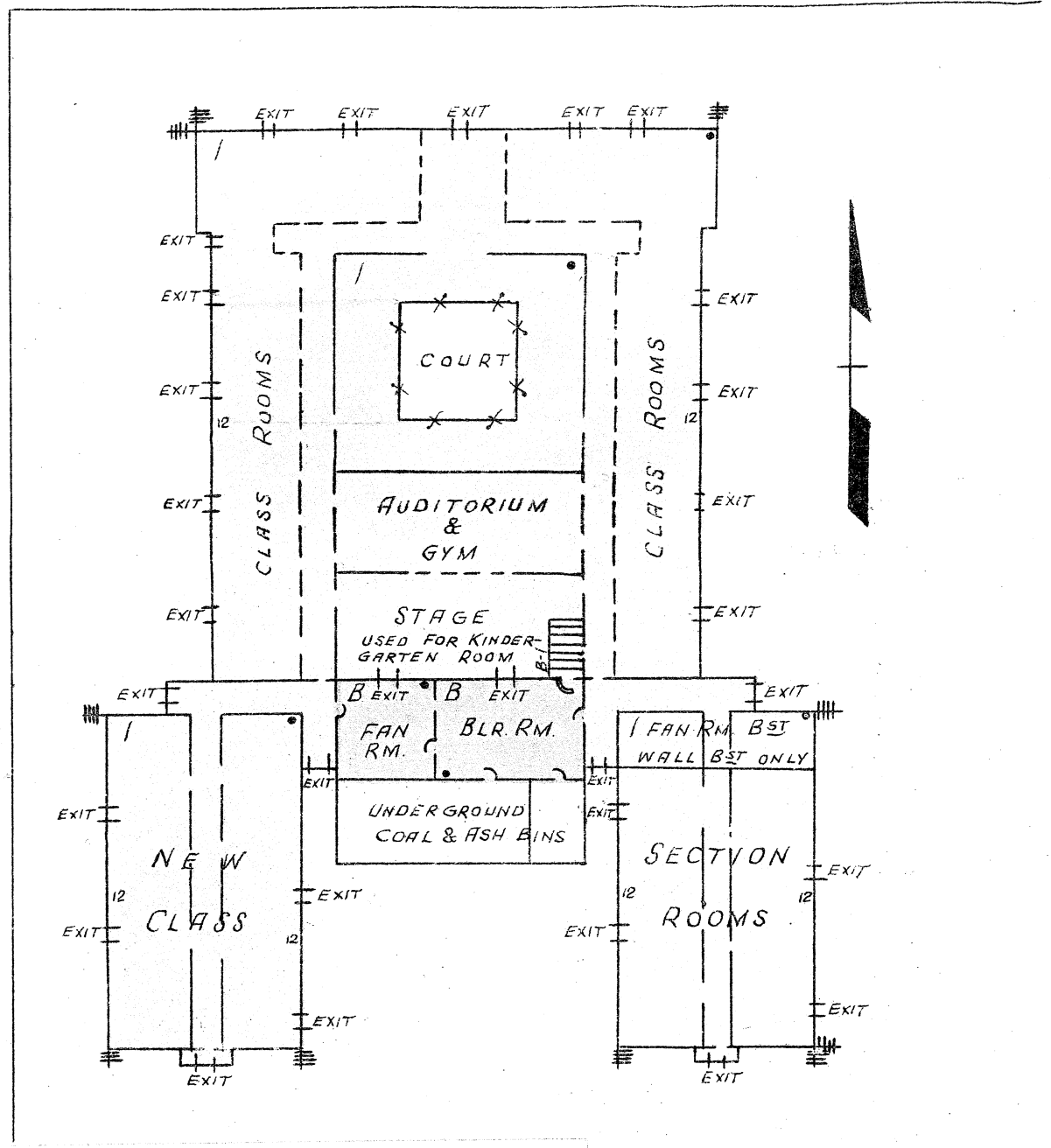
FA

42ND ST. E.

D.H.

6" W.P.

42ND AVE. SD.



# HIAWATHA SCHOOL

MINNEAPOLIS, MINNESOTA

SCALE: 1 IN.=50 FT.

<b>ERECTED</b>	1916, add'n. 1923.
<b>CONDITION</b>	Good.
<b>HEIGHT</b>	One story.
<b>AREA</b>	Basement, 5500 Sq. Ft. First, 39,000 Sq. Ft.
<b>WALLS</b>	Stucco over hollow Tile, 12"
<b>FLOORS</b>	Concrete old section, ordinary wood joist new section.
<b>ROOF</b>	Ordinary wood joist, composition sur- faced.
<b>FLOOR OPENINGS</b>	One enclosed stairway to basement approved door not auto.