

KEEWAYDIN SCHOOL

52nd Street E. and 30th Avenue

1931

Miss Harriet Briggs, Principal

Originally Erected	1928
Number of Class Rooms	18
Number of Special Rooms	0
Enrollment	654

KEEWAYDIN SCHOOL

This school is one of the new and better type of fireproof schools.

DETAILED REPORT

OCCUPANCY: Boiler room, transformer room, field house and storage in basement. Auditorium, office, teacher lunch room and class rooms, first. Class rooms, second.

CARE AND MAINTENANCE: Building comparatively new and receives excellent care.

EGRESS FACILITIES: Good. Ample exits with all doors, where necessary, provided with panic bars. Width of stairways to second slightly deficient.

COMMON HAZARDS: LIGHT -- Electric, wiring in rigid conduit well installed. HEAT -- Steam from two coal fired low pressure boilers in fireproof basement room with two communicating openings protected by metal covered two ply self-closing fire doors. VENTILATION -- Metal ventilating ducts extend through roof.

SPECIAL HAZARDS: Safely installed gas range in teachers lunch room. Oil cooled transformers, total $87\frac{1}{2}$ K.V.A., located in slightly sub-standard vault.

EXPOSURES: None.

FIRST AID PROTECTION: Poor protection afforded by chemical extinguishers, deficient in number.

PUBLIC PROTECTION: Five double head hydrants on 6 inch and 8 inch mains available within 400 feet. Fire department located one and one-half miles away over unpaved streets.

RECOMMENDATIONS

1. Chemical extinguisher equipment should be made standard.
2. Approved two ply fire door should be provided for opening to roof space and door kept closed at all times.
3. Two openings to boiler room should be provided with approved three ply fire doors.
4. Transformer vault should be made standard.

KEEWAYDIN SCHOOL

MINNEAPOLIS, MINNESOTA

SCALE: 1 IN. = 50 FT.

52ND ST. E.

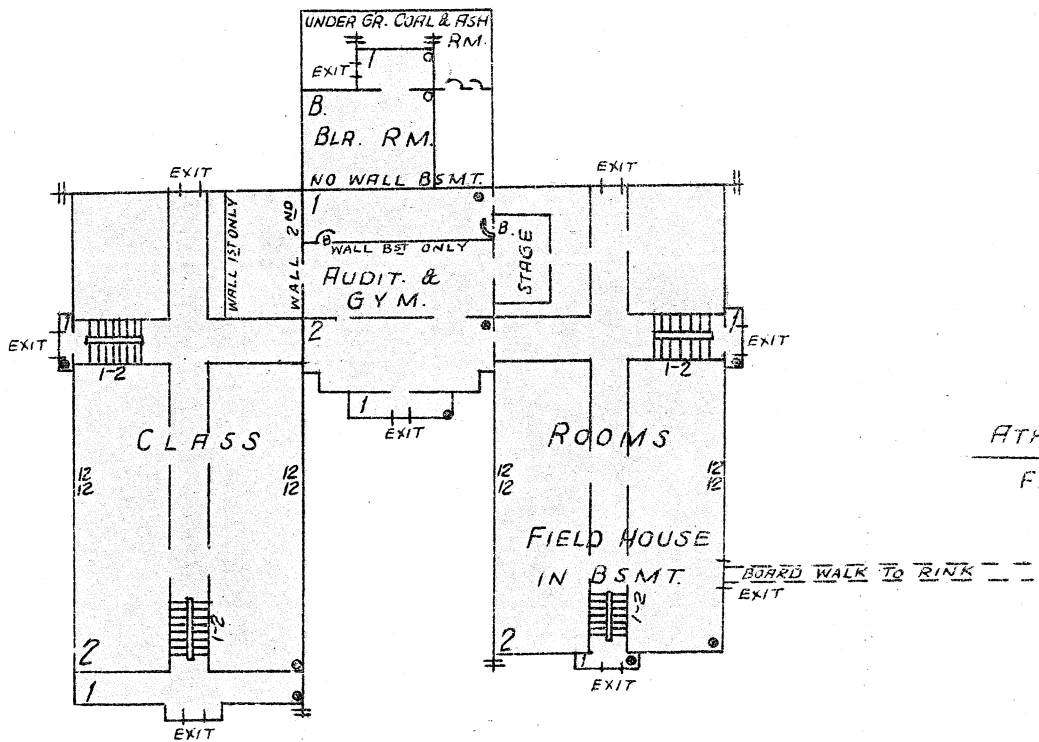
6" W.P.
NOKOMIS AV.

6" W. PIPE

AV. S.

30TH

400' TO HYDRANT



ERECTED	1928
CONDITION	Excellent
HEIGHT	One and two stories
AREA	Basement, 7,750 Sq. Ft. First, 18,550 Sq. Ft. Second 15,450 Sq. Ft.
WALLS	8" Hollow Tile
FLOORS	4" Brick faced, Panel Type
FLOORS	Reinforced concrete and tile
ROOF	False wood over reinforce Concrete and tile ceiling
FLOOR	Four open stairways, first to second
OPENINGS	One, enclosed stair to basement. Auto fire door.

